



## BRING TO CAMP EVERYDAY!

- Backpack
- Re-usable Water Bottle
- Sack Lunch
- Wear Socks and Shoes
- Sun Screen - Multiple applications each day
- Swim Suit and Towels on days we swim/get wet



## MISSOURI STATE EXEMPTION STATUS

Ballwin Parks and Recreation has been approved by the State of Missouri for Exemption Status for a childcare facility. Ballwin Day Camp meets all the required statutes to meet the exemptions set forth in Missouri Statute, sections 210.201 and 210.211, RSMo, which is monitored and enforced by the Department of Elementary and Secondary Education (DESE). Ballwin Parks and Recreation takes pride in offering quality & safe Day Camp to the Ballwin area.

## WELCOME

Welcome to Ballwin Camps! This week we offer Ballwin Day Camp, Teen Camp, Aqua Camp, & Crayola Camp. We are excited to see you next week for Ballwin Camp Week 8. We hope your campers enjoy this week of camp!

## Table of Contents

Day Camp	Page 2
Teen Camp	Page 3
Aqua Camp	Page 4
Crayola Camp	Page 5
Wrap-Up	Page 6



## SAFETY

- All Campers must be dropped off in person at the appropriate drop off locations. As you exit your vehicles please keep your camper close and watch for other traffic in the parking lots.
- Check your camper in with a counselor at drop off and get a verbal confirmation from the camp staff your camper is checked in.
- At pick-up, be sure to have your ID out and ready to show to the counselors. Showing your ID at pick-up is required.
- Any changes for Camper pick up, such as picking up early or having an alternate person pick up (i.e. Grandparent), please email the Camp Director at least 2 hours prior; [campdirector@ballwin.mo.us](mailto:campdirector@ballwin.mo.us)



# BALLWIN DAY CAMP

## SCHEDULE

Monday - 9am - 4 pm - The Pointe  
 Tuesday - 9am - 4 pm - The Pointe  
 Wednesday - 9am - 4 pm - The Pointe  
 • Field Trip Day - Wear your camp shirt  
 Thursday - 9am - 4 pm - North Pointe  
 Friday - 9am - 4 pm - The Pointe (Kona Ice)  
 For those that purchased  
 Club AM 7-9am - Club PM 4-6pm



## CAMP CHAT...

Day camps have shaped numerous stars, like Michael Jordan refining his skills in New York City's programs and Jennifer Lopez enjoying creative pursuits. From athlete Michael Phelps to actor Natalie Portman, these camps fostered talents early on, providing crucial foundations for their future successes in sports, arts, and entertainment. Who knows, we could have our very own future star in our camps right now. Although stardom is highly popular and worth working toward, Ballwin Day Camp is positive it is shaping future leaders each week.



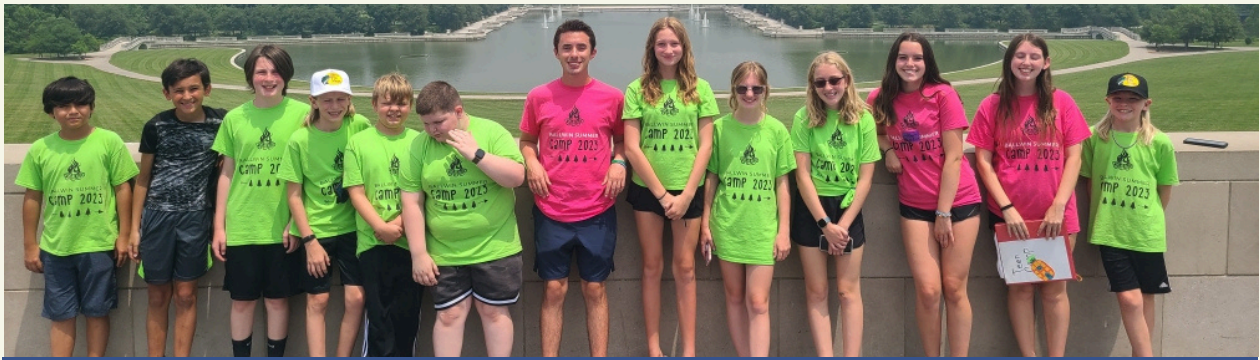
## DAY CAMP FIELD TRIP

On Wednesday Camp will visit Bowlero in Valley Park. Campers will hit the lanes giving their best shot at a strike, and an arcade card for limited play during their visit. The campers will get on the bus at 9:30 am SHARP and will return around 2:00 pm, back at The Pointe.



## SWIMMING DAY CAMP

- **Monday & Tuesday** - Indoor Pool (approx. 1 hr)
- **Wednesday** - NO Swimming - Field Trip
- **Thursday** - North Pointe,
  - drop off & pickup - Holloway Park Pavilion.
- **Friday** - water activities in the back field
  - Bring a suit/clothes to get wet.
- Campers need to bring a towel and on all days campers are getting wet.
- Please bring your own Lifejacket if you indicated your child is required to wear one!
- Swim tests will be administered every Monday.
- Bring plenty of Sunscreen



# BALLWIN TEEN CAMP

## SCHEDULE

Monday - 9am - 4 pm - The Pointe

Tuesday - 9am - 4 pm - North Pointe

Wednesday - 9am - 4 pm - The Pointe

- Field Trip Day - Wear your camp shirt

Thursday - 9am - 4 pm - North Pointe

Friday - 9am - 4 pm - The Pointe

For those that purchased

Club AM 7-9am - Club PM 4-6pm



**MINI GOLF & SHAVE ICE**

## TEEN TALK...

**Riddle me this:**

In fields we play, under the sun's sway,  
 Crafts and games fill our day away.  
 Before teen years start their climb,  
 In day camp fun, memories chime.  
 Where laughter reigns, and friendships bloom,  
 Guess this place of childhood's room.

**Answer:** Summer Day Camp! Your campers may be getting older, but we still offer them the opportunity to play and enjoy the summer at Ballwin Teen Camp.



## FIELD TRIP

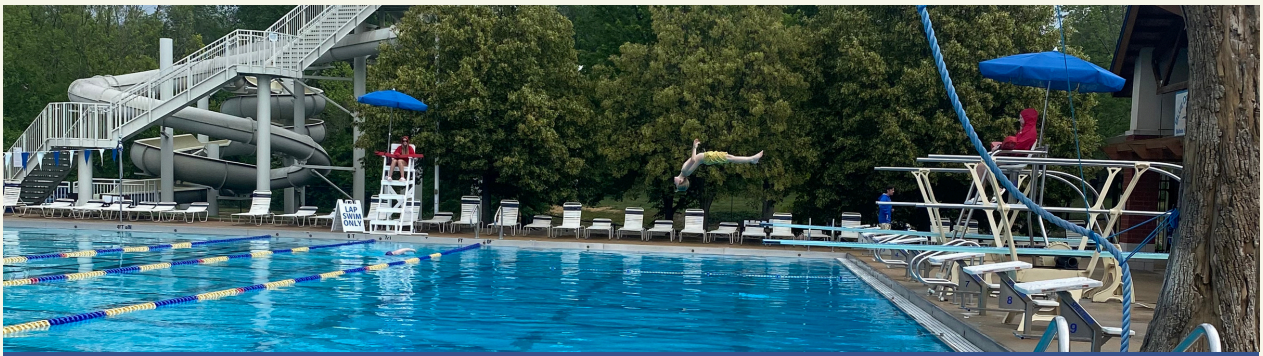
On Wednesday Teen Camp will visit Aloha Mini Golf and play a few rounds of mini golf. Campers are welcome to bring money to purchase shaved ice. The campers will get on the bus at 10:00 am SHARP and will return around 2:00 pm, back at The Pointe.



## SWIMMING

TEEN CAMP

- **Monday** - Indoor Pool (approx. 1 hr)
- **Tuesday & Thursday** - North Pointe
  - drop off & pickup - Holloway Park Pavilion.
- **Wednesday** - No Swimming - Field Trip
- **Friday** - water activities in the back field
  - Bring a suit/clothes to get wet.
- Campers need to bring a towel and on all days campers are getting wet.
- Please bring your own Lifejacket if you indicated your child is required to wear one!
- Swim tests will be administered every Monday.



# BALLWIN AQUA CAMP

## SCHEDULE

Monday - Friday

- 9am - 4 pm - North Pointe Aquatic Center
- Drop off at Pavilion by Holloway Park
- Pick up inside North Pointe Aquatic Center

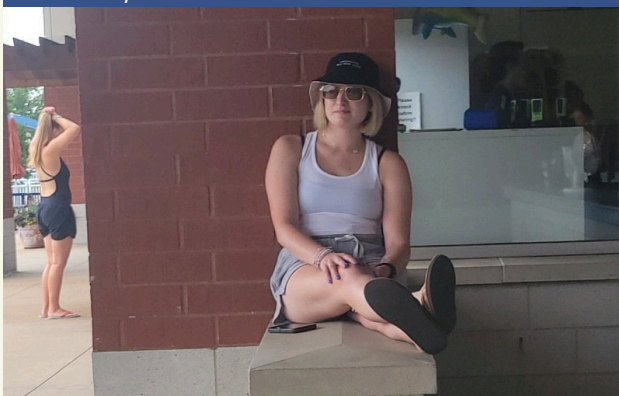
For those that purchased  
Club PM 4-6pm  
(NO Club AM)



## BUBBLE TALK...

We asked AI for the top 5 benefits of having a municipal pool. Ballwin must be doing something right, because we "Nailed It!"

1. Municipal pools provide affordable access to swimming for local communities.
2. They offer swimming lessons that promote water safety for all ages.
3. Some pools host swim teams and clubs, fostering local sports participation.
4. Lifeguards undergo rigorous training to ensure swimmers' safety.
5. Pools are maintained regularly to ensure cleanliness and safety standards are met.



## NEW FOR AQUA CAMP

New this year, Aqua Camp requires all campers to be able to pass a Swim Test. The swim test will be swimming 25 yards unassisted and tread water for 2 minutes. This is to ensure campers possess the sufficient swimming skills to participate in swimming activities and games. All campers will be tested on Monday. Those that do not pass will be transferred to regular Day Camp, which will include a \$20 transfer fee.



## SWIMMING AQUA CAMP

- **Monday - Friday** - We Swim Every Day!
- Campers need to bring towels every day, preferably more than one.
- Please bring an extra set of dry clothes.
- Swim tests will be administered every Monday.
- In the case of Inclement Weather, we may move Aqua Camp to the Golf Course Event Center. Camper's parents/guardians will be notified.



# CRAYOLA CAMP

## SCHEDULE

Monday thru Friday  
9am - 4 pm  
The Pointe  
Meeting Room A

Kona Ice will be available Friday for purchase  
Club AM 7-9am - Club PM 4-6pm  
(For those that purchased)



## TRAVELING THROUGH ART...

Crayola® Artist's Passport Camp will travel the World through Art! Embark on an around-the-world cultural adventure, explore far-off places and learn about the people who live there, from the Americas to the Ivory Coast, from the cosmopolitan to the countryside. Experiment with Crayola® products, while trying art techniques developed by local artists and artisans. Make different masterpieces each day, such as drums, masks, canvases, prints, buses, and more! Bring the unique creations home and build a globally-inspired art gallery.



## PROJECTS FOR THE WEEK...

- Aboriginal Dot Art & Block Printing
- Animal Sculptures & Rattle Drums
- Imperial Jeweled Eggs & Tiki Masks
- Mud Art & Fish Printing
- Truck Art & Pacific Coast Art

NOTE: Crayola Art Camp programming ends at 3 pm, but counselors will be onsite until 4 pm when camp ends. Parents are welcome to pick up campers at 3 pm.



## NO SWIMMING CRAYOLA ART CAMP

This camp does not participate in swimming. The programming and operations of this camp is run by an outside organization of professionals, but do not participate in swimming activities. The schedule of activities and projects are focused on art and the creative products of Crayola. No need to bring a swim suit or swimming items to this camp.



## CAMP NOTIFICATIONS

Ballwin Camps will be using TEXTCASTER, as it's notification method this year. In the event the schedule changes or an update on camp that needs immediate attention, we will be using TEXTCASTER. This includes drop-off and pick up changes to the schedule.

### DIRECTIONS:

Step 1: Scan the QR code

Step 2: Sign up by filling in name and zip code.

Step 3: Click on -Yes to receive texts  
(email is also an option)

Step 4: Choose the "SUMMER CAMP" message group.

Step 5: Add in your secure code and follow prompts.



## SUNSCREEN

Sunscreen is required for each camper to bring to each day of camp. Camp Staff have scheduled sunscreen application times throughout the day. Campers will be required to apply and re-apply sunscreen regardless of how sunny or cool the weather. Please provide enough sunscreen for your camper to apply during the entire week. Sunscreen must be SPF 30 or higher. It is suggested campers come to camp familiar with their sunscreen and how to apply it.



Life Vest

Jumper Life Jacket

Life Jacket

## LIFE JACKETS

New this year, Ballwin has included a lifejacket question to all camp registration. If you indicated you want your camper to wear a lifejacket, we will require them to wear one at all swimming times (No exceptions). You are required to send your camper with their own life jacket.

- Note: All life jackets must be US Coast Guard Approved with a clear label. Any unapproved Lifejackets will not be allowed and will affect your campers access to swimming.



Every Friday, Ballwin Day Campers and Specialty Camps located at The Pointe will have the opportunity to purchase a treat from Kona Ice. If your camper wants to partake, please send them with cash on Fridays. This is optional and may not be offered on days of bad weather.

# CONGRATULATIONS!



## CAMPERS OF THE WEEK

Each week the camp leads will select a few campers that have shown great Ballwin Spirit, Kindness, and Good Attitudes during the week. On Friday's we will recognize these campers!

A big Thank you to Oberweis for sponsoring this program.



## STAFF "CHAMP AT CAMP"

Ballwin Camp Staff have been challenged to provide superior care and memorable experiences at camp. By doing so they put aside the daily challenges of being a counselor and showcase a positive attitude and a go getter mentality. If you want to nominate a counselor for this award, please use the link below.



People's Choice - Isaac



Director's Award - John



Most Spirit Award - Dasia

A Champ at Camp is a creed that stands for "Counselors are Heroes, Ambassadors, Mentors, and Practitioners" at Camp. Each week we will take nominations from parent using the link below. Camp counselors will be able to win three categories of recognition; Peoples Choice (your nominations), Directors Award, and Most Spirited camp counselor. The camp counselors will be recognized each Friday with the Campers of the Week, and also receive a congratulations gift!

**NOMINATE YOUR CAMP CHAMP: CLICK HERE**