

ISSUE 4 VOLUME 6 NOVEMBER 2022

# Ballwin *Life*

LEAF COLLECTION P. 8  
NEW POLICE STATION P. 12  
2023 SUMMER CAMP INFO P. 24





## Our Mission

To protect, inform, and serve our community with diligence, respect, and transparency

### Contact Us

[City of Ballwin](#)

(636) 227-9000

[www.ballwin.mo.us](http://www.ballwin.mo.us)

[Code Enforcement](#)

(636) 227-9000 \*option 3

[Ballwin Golf Course](#)

(636) 227-1750

[Municipal Court](#)

(636) 227-9000 \*option 4

[North Pointe Aquatic Center](#)

(636) 227-2981

[Parks and Recreation](#)

(636) 227-9000 \*option 6

[Police Department](#)

(636) 227-9000 \*option 7

[The Pointe at Ballwin Commons](#)

(636) 227-8950

[Public Works](#)

(636) 227-9000 \*option 2

### Report an Issue

Issues may be reported online by visiting [ballwin.mo.us](http://ballwin.mo.us) or by phone.

[Report a Pothole or Street Tree](#)

Contact Public Works

[Report a Code Issue](#)

Contact Code Enforcement

[Report a Tip to Police](#)

Contact the Police Department

**To report a crime in progress dial 911**

### Fire Protection

[Metro West](#)

(636) 458-2100

[West County EMS & Fire](#)

(636) 227-9350

[Monarch](#)

(314) 514-0900

### Helpful Numbers

[St. Louis County Main Office](#)

(314) 615-5000

[West County Chamber of Commerce](#)

(636) 230-9900

[Republic Services](#)

(636) 947-5959

[Ameren Missouri](#)

(314) 342-1000

[Spire](#)

(314) 621-6960

[Metropolitan Sewer District](#)

1 (866) 281-5737

[Missouri American Water](#)

1 (866) 430-0820

### Future Publications

February 2023

May 2023

Ad spaces are available. Email [mfreeman@ballwin.mo.us](mailto:mfreeman@ballwin.mo.us) to reserve!

Follow Us:



## MAYOR

Tim Pogue  
(636) 207-2386 (3320)  
tpogue@ballwin.mo.us

## WARD 1

Michael Finley  
(636) 207-2386 (3310)  
mfinley@ballwin.mo.us

Mike Utt  
(636) 207-2386 (3330)  
mutt@ballwin.mo.us

## WARD 2

Mark Stallmann  
(636) 207-2386 (3340)  
mstallmann@ballwin.mo.us

Kevin M. Roach  
(636) 207-2386 (3350)  
kroach@ballwin.mo.us

## WARD 3

Frank Fleming  
(636) 207-2386 (3370)  
ffleming@ballwin.mo.us

Jim Leahy  
(636) 207-2386 (3360)  
jleahy@ballwin.mo.us

## WARD 4

Ross Bullington  
(636) 207-2386 (3380)  
rbullington@ballwin.mo.us

David Siegel  
(636) 207-2386 (3390)  
dsiegel@ballwin.mo.us

## CITY ADMINISTRATOR

Eric Sterman  
(636) 227-9000  
esterman@ballwin.mo.us

# From Your Mayor



It's hard to believe the year is about to come to a close! It's been a memorable one, with lots of amazing events throughout the City with great turnout!

As you know by now, many businesses have been impacted by the staffing shortage, and the City of Ballwin is no different. With this year's leaf collection now underway, we ask for your patience as City staff keep up with the workload with a smaller than normal staff.

We also thank you for your patience this summer at North Pointe and the Pointe as we dealt with staffing difficulties there as well. We appreciate everyone being accomodating, and hope next year will be different!

We hope you join us in some of our year-end programs throughout our parks and facilities across the City of Ballwin, and we look forward to another great year in 2023!

Happy Holidays and a Happy New Year!

A handwritten signature in black ink, appearing to read 'Tim Pogue'.

Tim Pogue



# Table of Contents

## Administration

- 6 Business Spotlight
- 7 New Trash Rates

## Public Works

- 8 Leaf Pickup
- 9 Ward Map
- 10 Snow Removal

## Police Department

- 12 New Police Station
- 14 Chief's Corner
- 15 Ballwin Explorer Post Program
- 16 Holiday Safety
- 17 Winter Emergency Event

## Parks & Recreation

- 18 The Pointe at Ballwin Commons
- 20 Indoor Pool Programs
- 21 Fitness Classes & Personal Training
- 22 Programs
- 24 2023 Summer Camp
- 26 Special Events
- 28 Ballwin Golf Course

### On the Cover

This image was taken in the fall of 2020. It shows the tree-lined streets of Old Ballwin Road heading South.



**HUFFMAN**  
*Jewelers*



**\$7**

**WATCH BATTERY**

(WATCH W/SCREWS \$9) Excludes Invicta.  
With coupon. Expires 1/31/23



**WE BUY GOLD & DIAMONDS • APPRAISALS & REPAIRS**

**14740 Manchester Rd. • (636) 227-1211**

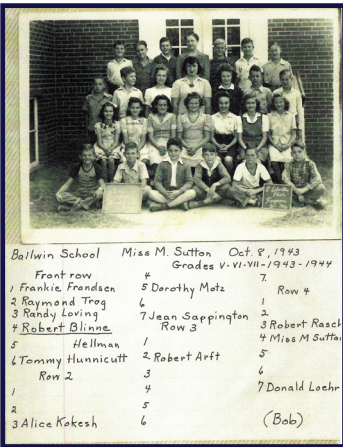
An electronic copy of this issue, and past issues, can be found on our website at [ballwin.mo.us](http://ballwin.mo.us). **Questions?** Please send an email to [mfreeman@ballwin.mo.us](mailto:mfreeman@ballwin.mo.us)





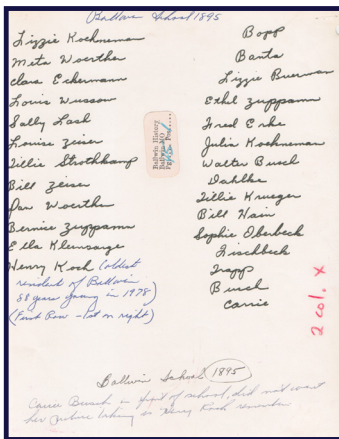
Mayme Blinne - Ballwin School Teacher

Are you interested in the history of the Ballwin area? Do you have family recollections from generations who have lived here before WWII? Would you like to share those recollections as part of an oral history project? Do you have photographs, documents, or artifacts that date fifty years or more? Would you like to have photographs or documents scanned and saved as digital files? Are you interested in genealogy? Would you like to be involved in expanding the Find-a-Grave documentation for area graveyards and cemeteries?



Grades 1-5, Ballwin Elementary, 1943

Starting on January 10th, 2023 and continuing every second Tuesday of the month for the duration of 2023, the Ballwin Historical Commission will offer presentations in all of these subjects. The Saint Louis County Library's Department of History and Genealogy will partner with the Ballwin Historical Commission to coordinate activities so that the resources of both organizations are available for this series of events. The meetings will take place at The Pointe at Ballwin Commons starting at 6:00 p.m. Each session will last 60-90 minutes. Email [history@ballwin.mo.us](mailto:history@ballwin.mo.us) for more information.



Ballwin School ID List in 1895



Ballwin School in 1895



Grades 1-4, Ballwin Elementary, 1949

Do you have relatives in any of these photos? As part of this project, the Ballwin Historical Commission will access its archives to link our area's past to its present and future. Join us for this "deep dive" into our region's history!



# the **b** **i** **z** Spotlight Shop Ballwin First



The holiday season is right around the corner, and that means it's time to support our local business community!

As much as you can, we encourage you to purchase your holiday gifts from the businesses right here in your neighborhood! Not only does this show of support help them thrive, it means your tax dollars stay right here in Ballwin to fund the essential services you depend on, such as street maintenance and police services. A few of our businesses also reward you for shopping locally, by offering a discount JUST for Ballwin residents and Pointe members! To learn more about the Shop Ballwin First Program, including what businesses participate and how to access these deals, visit [www.ballwin.mo.us/Shop-Ballwin-First-Program/](http://www.ballwin.mo.us/Shop-Ballwin-First-Program/).

So remember to Shop Ballwin First, both in store and online, all holiday season long!

## PET SUPPLIES PLUS.

Plus

Prices you love.

Minus

Long lines you hate.



### Shop local. Love local.

**We love supporting local rescues**

.....

**Our team members love safely serving you & your pets**

.....

**Our franchisees & stores love being part of your local community**

At Pet Supplies Plus it's easy to find everything you need for all of your furry, scaly & feathery friends. Our local stores are smaller by choice and our shelves are stocked with just the right products, chosen to help you keep them happy and healthy. With our free 1 hour curbside pickup or same-day delivery we'll bring your order right to your car or straight to your door, so you can put more play back in your day!

- + **Independently owned and operated**
- + **Price Match Guarantee**
- + **Widest selection of natural dog food**
- + **Full-service grooming & self-service pet wash**

**Pet Supplies Plus Ballwin**  
15311 Manchester Road | 636.686.7181  
Mon-Sat: 9am-8pm • Sun: 10am-6pm



# New Trash Rates

The City of Ballwin requested bids for a new trash/recycling provider in June. Three companies bid to provide services, and Republic Services (Allied Services) was the lowest bidder. The Board of Aldermen voted in July to accept Republic Services bid, and continue on with them as our trash provider.

We are currently in the last year of a 10 year contract with Republic Services. The new contract begins on January 1st, 2023, and ends on December 31, 2028, with the option for two additional two year extensions.

	48 Gallon	65 Gallon	95 Gallon
2023	\$21.43	\$23.71	\$25.98
2024	\$22.18	\$24.54	\$26.89
2025	\$22.96	\$25.40	\$27.83
2026	\$23.76	\$26.29	\$28.81
2027	\$24.59	\$27.21	\$29.82
2028	\$25.69	\$28.16	\$30.86

You will NOT need to get new trash/recycling bins since the City of Ballwin is staying with the same provider.

The rates above will take effect on January 1, 2023.

## 2022 Republic Services Holiday Schedule

### Thanksgiving Day (Thursday, November 24):

Monday routes will not be affected

Tuesday routes will not be affected

Wednesday routes will not be affected

Thursday routes will be picked up on Friday, November 25

Friday routes will be picked up on Saturday, November 26

### Christmas Day (Sunday, December 25)

No residential routes will be affected

### New Year's Day (Sunday, January 1)

No residential routes will be affected

**Problems/Concerns? Call Republic Services at (636) 947-5959**





# Leaf Pickup

**The Ballwin Public Works Department is excited to continue our free residential curbside leaf collection program this fall! This program began on October 24th and will run through the middle of December.**

Here are some friendly reminders to help get you and your yard ready for leaf pick-up day. For more information, please visit our website.

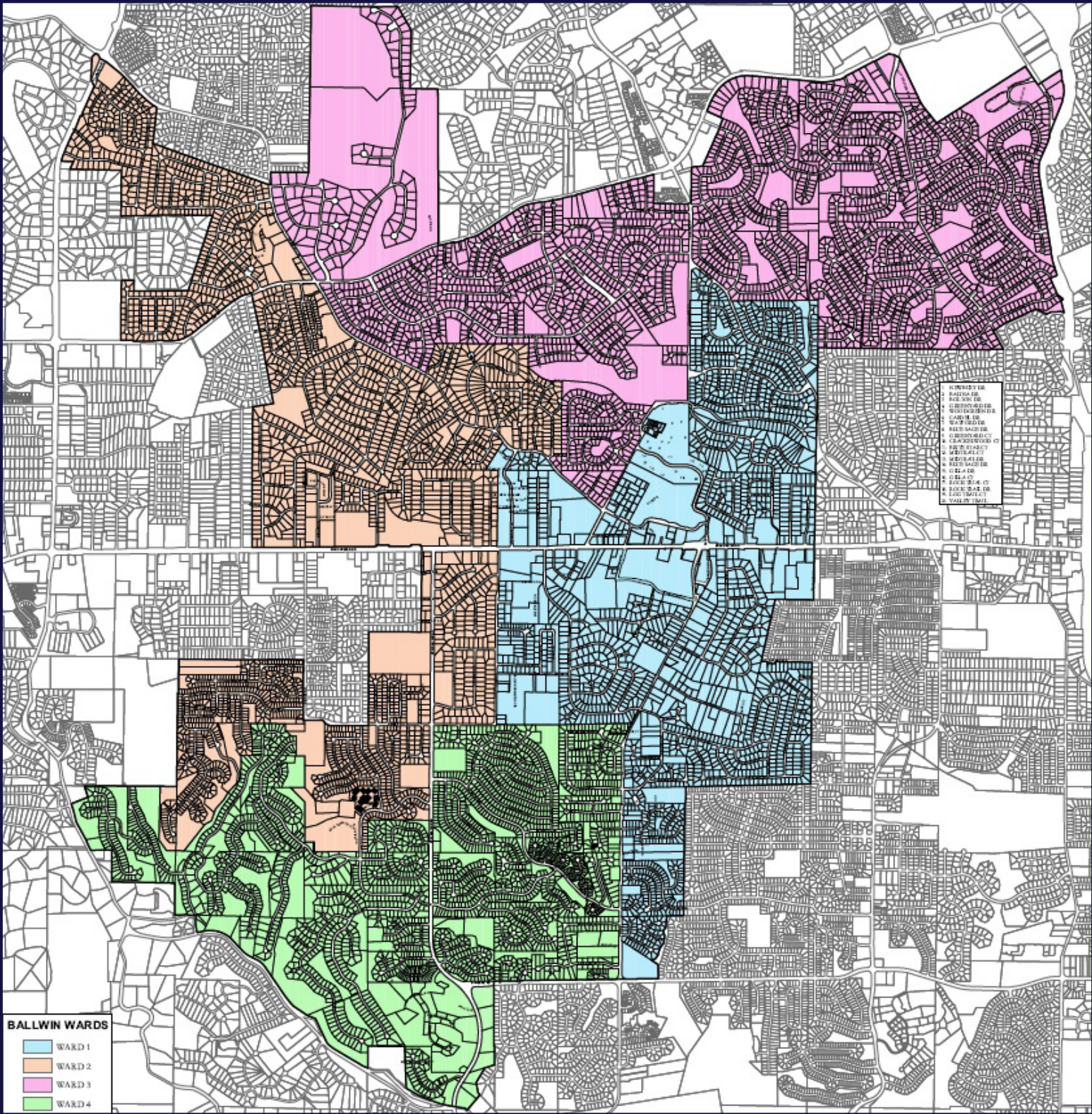
- There will be at least one crew assigned to each ward (1,2,3 and 4). If you're unsure where you live in, check the map to the right or head to [www.ballwin.mo.us/Ballwin-Ward-and-Street-Search/](http://www.ballwin.mo.us/Ballwin-Ward-and-Street-Search/)
- Crews will collect leaves every three weeks, Monday through Friday, and will begin each day where they ended the day before.
- If you'd prefer not to wait on our crews, Republic Services will pick up your bagged leaves as part of their yard waste disposal.
- We have created a Master Street List by ward, which is updated every afternoon to help you track crews progress throughout the City. This can be accessed on the Curbside Leaf Collection page under the Public Works section on our website.
- Please rake your leaves to the edge of your property next to the street. Do not pile the leaves up in the street or gutter.
- Do not park on top, or in front of leaf piles.
- This program may be delayed, halted, or ended due to weather conditions, manpower issues, heightened leaf volume, equipment down time, etc.
- There will be no pickup on City-observed holidays (Nov. 24, Nov. 25, Dec. 23, Dec. 26)
- Leaves will NOT be collected from any multi-family units such as apartments, condominiums, or villas.
- Leaves will NOT be collected along private streets within any multi-family complexes or any commercial, school, institutions, or non-City governmental properties.



# Ward Map

Find out which ward you live in below.

Or head to [www.ballwin.mo.us/Ballwin-Ward-and-Street-Search/](http://www.ballwin.mo.us/Ballwin-Ward-and-Street-Search/)





# Snow Removal

The City of Ballwin prepares for snow/ice events by pre-treating roads and plowing snow when the snow accumulates approximately two inches.

Major arteries will receive top priority, followed by the collector streets, and then the minor subdivision streets and cul-de-sacs.

The City of Ballwin uses salt brine to pre-wet the roads before a snow storm or a freeze. It helps prevent ice from forming in the first place, and allows the City to clear the roads while using less salt, which is a big cost-saving measure.

Salt brine is sprayed on all streets during regular work hours in advance of a forecasted snow fall or freeze. Salt brine will not be applied if rain or freezing rain is predicted. Instead, de-icing salt will be spread about 4 hours in advance of the expected start of freezing rain.

During a winter storm emergency, crews will operate around the clock until the storm ends and all streets are cleared. You can help by removing your car from City streets when there is a snow emergency, under Ballwin's City Ordinance 20-02. A snow emergency occurs whenever snow accumulates to two inches or more during freezing rain or ice. This prohibition is in effect until the street has been cleared for emergency vehicles. If your vehicle is not removed, the Ballwin Police Department has the right to enforce this ordinance and remove your vehicle for you.





# Frequently Asked Questions

## What percentage does the City of Ballwin get from my property taxes?

Zero percent. The City of Ballwin does not charge property taxes for those that live in the City. The City of Ballwin is one of only a handful of municipalities in St. Louis County that does not charge a property tax. However, you will still pay property taxes to other entities, such as the Parkway or Rockwood School Districts, the state of Missouri, St. Louis County, and Metro West, Monarch or West County Fire Districts, among others. Check your property tax bill for a full list of where your property taxes go.

## Why does the City of Ballwin treat for mosquitoes?

The City of Ballwin treats mosquitoes as approved by the Board of Aldermen. It is done to help prevent the spread of mosquito-borne disease and as a convenience for residents to keep mosquitos out of yards and parks.

## Why does the City of Ballwin sweep streets?

The City of Ballwin is required to sweep streets by the Municipal Separate Storm Sewer System permit we have as a city. Metropolitan St. Louis Sewer District and many other cities are also required to sweep per Missouri's Department of Natural Resources at least 4 times per year. The City of Ballwin has also passed an ordinance to follow these rules.



**I love this town.**

**Thanks, Ballwin Residents.**

I love being here to help life go right™ in a community where people are making a difference every day. Thank you for all you do.

**Steve Martinez Ins Agcy Inc**  
Steve Martinez, Agent  
104 Holloway Road  
Ballwin, MO 63011  
Bus: 636-227-7888

**State Farm®**

1601485 State Farm, Bloomington, IL

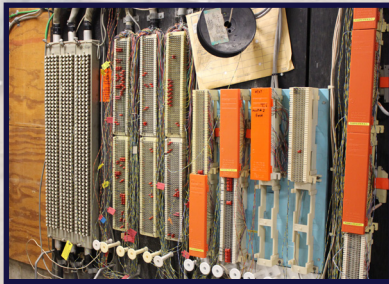


# New Ballwin Police Station



*Rendering of the finished new Ballwin Police Station*

Construction on the new Ballwin Police Station is well underway! The \$13.6 million dollar, 36,500 square foot project is slated to open in the Spring of 2023. The project is being completed in conjunction with planning, architecture and design firm JEMA, and being built by Wright Construction.



*Some infrastructure has been patchworked to help the building function, but cannot be replaced or repaired without significant cost.*



*A makeshift gutter has been built to prevent leaks*

The City's current Police Station, located at 300 Park Drive, was built in 1970. The building previously housed several departments, including administration, parks and recreation, municipal courts and the police department. The last major remodel to the facility was in 1999, after the City's administration department moved out.



The facility cannot be updated without completely gutting the building, to bring it up to ADA compliance. It is not financially feasible to perform such a renovation.



The new Police Station is being financed with **no debt** to the City, meaning your taxes will **NOT** go up to pay for this building. Funding for the project is coming from the City's fund reserves and federal stimulus money received during the pandemic.



Groundbreaking for the new Police Station was held in April, with construction currently underway. There will be some intermittent road closures to Kehrs Mill and Ballpark Drive as construction continues throughout the next few months.

We'll announce a grand opening as soon as the building is ready!

You can keep up with updates on the police station by heading to our website at [www.ballwin.mo.us/newpolicestation/](http://www.ballwin.mo.us/newpolicestation/)



# Chief's Corner



The City of Ballwin is committed to improving and/or maintaining a good quality of life for its residents. To do this the City passes ordinances such as limiting the times your trash cans can be at the curb, limiting the distance you can park to a mailbox, and requiring your lawn to be kept... tidy.

When these “quality of life” issues come up most people simply call the police and our officers respond and help to rectify this issue. (By the way, your neighbor parking their car on the street in front of your house is not against the law. It’s annoying, but legal.)

One of the most common calls we get that falls into this category, and one of the most dangerous, is traffic violations within neighborhoods. Rarely does a day go by when we don’t receive a complaint about this. Speeding, rolling stop signs, failing to yield...these absolutely affect your quality of life and the Ballwin Police Department is committed to working on this issue every day.

When a resident calls about speeders on their street, that location is put on a list and each day our patrol officers do traffic enforcement in an area on that list, between police calls. Additionally, we have a two-officer Traffic Unit whose job it is to write accident reports, analyze traffic issues, and enforce traffic ordinances.

So, let me explain the analysis part. The department owns two “traffic analysis” boxes. These are non-descript boxes, about the size of a shoebox, that we mount on a pole within the block to be analyzed. The box will be on the pole for seven days and it will “read” every vehicle that goes by, in both directions. At the end of seven days the information is downloaded into a computer. That download turns into a document that is well over 100 pages. The speed of every single vehicle has been recorded and is charted based on direction, speed, time of day, day of week, etc. Then all that information is analyzed. This gives us a clear picture as to the level of the traffic issue on that block.

If we find that an issue exists, we work to educate the drivers by installing a lighted sign that tells people their speed as they drive by. After that sign has been there for a week, we follow it up with enforcement: an officer enforcing the speed limit by making traffic stops that will result in a ticket or a warning.

As of the end of August, this analysis, education, and enforcement process has been done in 52 different blocks within the City.

I can honestly say that we at the Ballwin Police Department are concerned about your safety and your quality of life.

Oh, and let me say a word about “speed traps”. They are not actually “traps”. If we kept the speed limit a secret, then they would be “traps”. We actually put signs up that tell motorists the maximum speed they are allowed to drive on that roadway, commonly referred to as Speed Limit Signs. If the motorist then decides to exceed that limit on their own, well, they may get to meet a Ballwin Police Officer....especially on New Ballwin Road.

- Chief Doug Schaeffler



# Ballwin Explorer Post Program

The Ballwin Police Department, The Ellisville Police Department, and the Manchester Police Department have formed The Route 66 Area Explorer Post #9220. The Explorer Post is designed for those who have completed 8th grade and are no older than 21 years of age.

The Explorers meet once a month, where officers will teach them various law enforcement topics. These topics range from building clearing, K9 tracking, traffic stops, and much more. The officers in charge of the program have the explorers partake in various community outreach events such as DEA Drug Take Back, Tons of Trucks, Ballwin Days, and more.

The explorers get a viable life lesson, knowledge of the law enforcement career field, and can even put it on a college application. If you have further questions, if you are interested or know someone who might be interested, you can contact any of agencies listed, or Ballwin Police Officer Ryan Carr.



## Putting you first made us #1.

**Greg Beasley, Agent**  
15212B Manchester Road  
Ballwin, MO 63011  
Bus: 636-227-4242  
greg.beasley.b5wx@statefarm.com

Making you our #1 priority is what's made State Farm® #1\* in auto insurance. I'm here to listen to your needs and to help life go right.  
**CALL ME TODAY.**

\*Based on written premium as reported by SNL Financial 2014.



State Farm Mutual Automobile Insurance Company  
State Farm Indemnity Company, Bloomington, IL

1601917

State Farm County Mutual Insurance Company of Texas; Dallas, TX





# Holiday Safety

With the holiday season right around the corner, here are some friendly tips to help ensure it runs smoothly and to keep everyone in your family safe. Keep in mind the following tips are suggestions, and are not foolproof but can only help.

## Preparing for the Holiday Season

- 1. Avoid leaving gifts in your car, and always lock up**
- 2. Leave the lights on, or set them on timers if you are going to be out of town**
- 3. Set up vacation checks with the Ballwin Police Department**
- 4. Have packages delivered to an address with immediate pick up**
- 5. Get creative with the disposal of a 70" TV or video game box**
- 6. Wait to broadcast pictures of vacations on social media until you return**



# Winter Emergency Event

With winter approaching, and if the Farmers Almanac is correct, St. Louis is due for a very cold season. Now is the time to ask yourself if you are prepared in case you're snowed in, lose power, or even get stuck in your vehicle.

It is recommended to have a gallon of water per person, nonperishable food, a first aid kit, battery powered lights, extra batteries, battery powered radio, and a fully charged battery pack for a cell phone just in case. An emergency kit should be designed to last for three days. The emergency kit should be an important part of anyone's preparedness plan.

This kit is only a start for what you might need, and can be changed based upon needs and circumstances.

**WINTER EMERGENCY KIT**

**CHECKLIST**

- ✓ Water
- ✓ Nonperishable Foods
- ✓ First Aid Kit
- ✓ Flashlights
- ✓ Batteries

**WINTER SURVIVAL KIT**

- BATTERY POWERED RADIO
- SNACKS
- EMERGENCY FLARES AND REFLECTORS
- SHOVEL
- BRIGHT CLOTH TO TIE TO ANTENNA
- FRST AID KIT
- BATTERY OPERATED CELL PHONE CHARGER
- JUMPER CABLES
- SPACE BLANKET
- POCKET KNIFE
- CANDLES
- WATER BOTTLES
- WATER PROOF MATCHES
- WHISTLE
- FLASHLIGHT WITH EXTRA BATTERIES
- FIRE EXTINGUISHER
- SMALL TOOL BOX
- DUFFEL BAG FULL OF CLOTHES AND EXTRA SNOW GEAR
- SAND OR ROAD SALT
- ROPE OR CHAINS

[www.aaphomeschooling.com](http://www.aaphomeschooling.com)



# The Pointe at Ballwin Commons



## Information

#1 Ballwin Commons Circle  
Ballwin, MO 63021  
(636) 227-8950

## Hours of Operation

Monday - Friday 5:15 a.m. - 9 p.m.  
Saturday/Sunday 7 a.m. - 6 p.m.

## Holiday Hours

November 24	CLOSED
December 24	7 a.m. - 1 p.m.
December 25	CLOSED
December 31	7 a.m. - 3 p.m.
January 1	10 a.m. - 6 p.m.

## Pointe Play Center\* (3 months - 10 years)

Monday - Saturday 8:30 a.m. - 12 p.m.  
Monday - Thursday 5 - 7:30 p.m.

\*\$4/child (max. stay 2hrs). Hours subject to change.

## 20-Visit Swipe Cards

Youth, 3 - 18	\$110	\$170
Adult, 19 - 61	\$130	\$170
Senior, 62+	\$110	\$170
Hero	\$40	\$60

## Memberships (see next page for rates)

To receive Resident rates, you must have a current Resident ID Card. If a card is needed, bring a utility bill to The Pointe's welcome desk. Additional information:

- 1) Monthly options involve a \$20 activation fee.
- 2) Family memberships may include children living at home through the age of 23, and may not have more than two adults per household.
- 3) Senior Couple memberships only require one person be 62 or older.
- 4) Hero (Police, Fire, EMS, Veterans, and Active Military) memberships are only available for individuals.

## Fitness Center

The Pointe is home to a state-of-the-art fitness center including a full-service cardio section, Cybex circuit, and free-weight area. Whether your goal is to find a gym to help you build strength, lose weight, or just have a safe place to walk on an indoor track near your home, you need to get to The Pointe.

## Indoor Pool

The indoor pool at The Pointe features three lap lanes, a two-story water slide, an indoor water playground, lazy river, and vortex. The Pointe offers swim lessons, water aerobics, and more. Please review the Indoor Pool Schedule on our website to ensure the pool is open for the purpose you wish to use it.

## Open Swim Holiday/Break Hours

Thanksgiving:

November 23: 12 - 8:30 p.m.  
November 25: 12 - 8:30 p.m.

Holiday Break:

December 23: 12 - 8:30 p.m.  
December 26: 12 - 8:30 p.m.  
December 27: 12 - 6:30 p.m.  
December 28: 12 - 8:30 p.m.  
December 29: 12 - 6:30 p.m.  
December 30: 12 - 8:30 p.m.  
January 2: 12 - 8:30 p.m.

MLK Weekend:

January 13: 12 - 8:30 p.m.  
January 16: 12 - 8:30 p.m.





Residents	Pointe Monthly*	Pointe Yearly	Platinum Monthly*	Platinum Yearly	Pointe Daily Visit
Youth (3-18)	\$20	\$216	\$33	\$372	\$6
Adult (19-61)	\$33	\$372	\$49	\$564	\$7
Senior (62+)	\$19	\$204	\$36	\$408	\$6
Senior Couple*	\$26	\$288	\$46	\$528	N/A
Single+ One	\$41	\$468	\$71	\$828	N/A
Family*	\$46	\$528	\$78	\$912	N/A
Hero*	\$19	\$204	\$36	\$408	\$5
Nonresidents	Pointe Monthly*	Pointe Yearly	Platinum Monthly*	Platinum Yearly	Pointe Daily Visit
Youth (3-18)	\$31	\$348	\$46	\$528	\$9
Adult (19-61)	\$50	\$576	\$70	\$816	\$9
Senior (62+)	\$32	\$360	\$50	\$576	\$9
Senior Couple*	\$43	\$492	\$66	\$768	N/A
Single+ One	\$63	\$732	\$84	\$984	N/A
Family*	\$70	\$816	\$100	\$1,176	N/A
Hero*	\$32	\$360	\$50	\$576	\$8

\*See membership section on previous page for more details

## Membership Specials

### November

**Personal Training** - 5% off of 5 visits, 10% off 10 visits, and 15% off 20 visits.

**Visit Card Class Special** - Receive two (2) additional visits for each card purchased.

**30-Day Student Membership** - Bring in your school ID and purchase a 30-day membership at The Pointe (Resident \$36, Nonresident \$58).

### December

**Commit To Be Fit** - Get 10% off when you purchase an annual Platinum or Pointe membership. Not valid on debit memberships.

**30-Day Student Membership** - Bring in your school ID and purchase a 30-day membership at The Pointe (Resident \$36, Nonresident \$58).

### January

**Commit To Be Fit** - Get 10% off when you purchase an annual Platinum or Pointe membership. Not valid on debit memberships.

**Open House Special** (January 8) - Pay no entry fee and get the rest of January free when joining on Open House Day only. The first debit will be on 1-31-22.



# Indoor Pool



We offer **swim lessons** at The Pointe year-round! There are eight levels of group swim lessons to fit your child's needs. If you are unsure what swim lesson level to sign up for, use the QR code below to access registration. These sessions are warm-up sessions and consist of 6 weeks of lessons.



## Tuesday/Thursday Lessons

**Dates:** Nov. 29 - Dec. 15  
**Times:** 4:30 p.m., 5:15 p.m., and 6 p.m.  
**Fee:** VIP \$45, Reg \$55  
**Ages:** 6 mos - 15 yrs  
**Location:** The Pointe

## Saturday Lessons

**Dates:** Nov. 12 - Dec. 17  
**Times:** 9:30 a.m., 10:15 a.m., and 11 a.m.  
**Fee:** VIP \$45, Reg \$55  
**Ages:** 6 mos - 15 years  
**Location:** The Pointe

**Private lessons** are always available for registration at The Pointe at Ballwin Commons Front Desk. We offer three packages of 3, 6 and 12 lessons for ages 6 months and older. Lessons will be taught in 30-minute increments. Please allow up to four weeks for us to assign an instructor.

## Shop N' Swim

Still have shopping to do, but don't want to bring the kids? Drop your kids off at the Pointe to swim, eat pizza, play in the gym and create crafts!

**Date:** Dec. 2 (Fri) (41130-01)  
Dec. 17 (Sat) (41130-02)  
**Time:** 5 - 8:30 p.m.  
**Fee:** VIP \$20, Reg \$25  
**Ages:** 5-12  
**Location:** The Pointe

## Red Cross Lifeguard Course

This course will certify you in shallow water lifeguard, water park skills, first aid, CPR/AED and bloodborne pathogens through a blended learning approach.

**Dates:** Nov. 4-6 (41120-07)  
Dec. 9-11 (41120-08)  
Jan. 6-8 (11120-01)  
**Time:** Fri: 4:30 p.m. - 8:30 p.m.  
Sat/Sun: 7 a.m. - 5 p.m.  
**Fee:** VIP \$95, Reg \$165 \*  
**Ages:** 15+  
**Location:** The Pointe  
\*New rates start in January



# Fitness Classes & Personal Training

Our fitness center offers a number of different classes available to both patrons and guests. Group Fitness classes are included with any membership. They are provided on a first-come, first-served basis and do not require registration. Visit the Fitness Center page on our website for more information.

The Pointe has five personal trainers on staff to help you reach your fitness goals. If you want personalized, one-on-one attention to keep you safe and accelerate your fitness progress, consider working with one of our certified trainers. Visit the Personal Training page on our website for more information.

Water Aerobics and Spinning classes are available for Platinum members only. See our website for those schedules at [ballwin.mo.us/Fitness-Center](http://ballwin.mo.us/Fitness-Center)

Sunday	Monday	Tuesday	Wednesday	Thursday	Friday	Saturday
8:15 - 9:00 a.m. PiYo Georgette	8:00 - 8:45 a.m. 50+ and Fit Mimi	8:00 - 8:45 a.m. Step Cardio Mimi		8:00 - 8:45 a.m. Functional 45 Pete	6-6:45 a.m. YO! Wake UP! Donna	8:00 - 8:45 a.m. Body Sculpt Mimi
		9:00 - 9:45 a.m. Classic Silver Sneakers Georgette	9:00 - 9:45 a.m. Classic Silver Sneakers Debbie		9:00 - 9:45 a.m. Classic Silver Sneakers Debbie	8:45 - 9:20 a.m. Step Cardio Mimi
	9:15 - 10:00 a.m. Boot Camp Georgette	9:15 - 10:00 a.m. Body Sculpt Pete	9:15 - 10:00 a.m. Pi-Yo Georgette	9:15 - 10:00 a.m. Body Sculpt Georgette	9:15 - 10:00 a.m. Step Cardio Mimi	10:00 - 10:45 a.m. Boot Camp Georgette
This Wednesday, 10 a.m. Classic Silver Sneakers is on a trial period through December 28. Class will remain on the schedule pending attendance			10:00 - 10:45 a.m. Classic Silver Sneakers Debbie	Silver Sneakers: Limit 30 All other classes: Limit 28		
	10:20 - 11:05 a.m. 50+ and Fit Debbie		10:10 - 10:50 a.m. Silver Sneakers Yoga Donna	10:30 - 11:15 a.m. Zumba Georgette	10:20 - 11:05 a.m. 50+ and Fit Debbie	
	11:20 - 12:05 p.m. 50+ and Fit Debbie	11:00 - 11:45 a.m. Fit 4 All Donna	11:00 - 11:45 a.m. 50+ and Fit Donna/Mimi	11:30 - 12:15 p.m. Zumba Gold Susan	11:20 - 12:05 p.m. 50+ and Fit Georgette	11:15 - Noon Zumba Georgette
		5:30 - 6:15 p.m. Zumba Karen		5:30 - 6:15 p.m. Pi-Yo Kathy		
	6:15 - 7:00 p.m. Fitball Georgette	6:30 - 7:15 p.m. Insane Intervals Pete	6:30 - 7:15 p.m. Pound Class Debbie	6:30 - 7:15 p.m. Yoga Kathy		

For descriptions/information on classes, email Matt Struempfler at [MStruempfler@ballwin.mo.us](mailto:MStruempfler@ballwin.mo.us).

# OPEN HOUSE

FREE

Saturday, January 7

7 a.m. - 6 p.m.







FREE:  
Admission  
Pool Use  
Raffles  
& Classes!



(636) 227-8950

#1 Ballwin  
Commons Circle  
Ballwin, MO 63021





# Parks & Recreation Programs

VIP pricing is given to Ballwin Residents with a current Parks & Recreation Resident ID card & individuals with a Platinum or Pointe membership. Regular pricing is given to anyone without a membership or valid Parks & Recreation Resident ID card. To learn more about Parks & Recreation Resident ID Cards, visit [www.ballwin.mo.us/Resident-ID-Cards/](http://www.ballwin.mo.us/Resident-ID-Cards/) or call (636) 227-8950.

<b>Color Code:</b>	<b>Kids</b>	<b>Any Age</b>	<b>Adults</b>	<b>Aquatic</b>
--------------------	-------------	----------------	---------------	----------------

## Bridge Club

Bring a partner or come make new friends, every Tuesday through April! Anyone is invited to join no registration required. Coffee provided, donations appreciated. Please note: This is not a beginning bridge forum.

**Days:** Tuesdays  
**Time:** 10:30 a.m. - 12:30 p.m.  
**Fee:** FREE  
**Ages:** 18+  
**Location:** The Pointe

## Mahjong Club

Bring a partner or come meet new friends, every Tuesday through April! Anyone is invited to join no registration required.

**Days:** Tuesdays  
**Time:** 1 - 3 p.m.  
**Fee:** FREE  
**Ages:** 18+  
**Location:** The Pointe

## Cozy Up and Craft

Learn all about the history of daylight saving and how it has evolved. While you learn, we'll be making cozy no-sew pillow and blankets. These will be great for the cold winter season or even as a gift!

**Dates:** Nov. 6 (48018)  
**Day:** Sunday  
**Time:** 1 - 3 p.m.  
**Fee:** VIP \$30/ Reg \$35  
**Ages:** 8 - 12  
**Location:** The Pointe

## Basic Training

Attention!! There are no 'at ease' moments in this six week, 24-class bootcamp style class. Each class features 25-40 minutes of calisthenics/drills followed by a class run/jog. Open to all fitness levels, this class is sure to get your day kickstarted.

**Dates:** Nov. 7 -Dec. 15  
(43412-08)  
Jan. 9 - Feb. 16  
(13312-01)  
**Days:** Mon - Thurs  
**Time:** 5:45 - 6:45 a.m.  
**Fee:** VIP \$129, Reg \$149  
**Ages:** 14+  
**Location:** The Pointe

## Group Pickleball Clinics

Join our instructor, Martha Roper, for a three-week skill building clinic! Sessions available for beginner/advanced and skilled. The sessions will focus on general skills such as dinking, ground strokes, serving, returning, and 3rd shot drops. Specific drills and games will be included. The intermediate level will work on the basics as well as strategic play and harder drills. Sign up at the Pointe or online.

**Dates:** Nov. 7, 14, 21  
(483200)  
Jan. 2, 9, 23  
(183200)  
**Days:** Mondays  
**Time:** Beg/Int. 1 p.m.  
Adv. 2 p.m.  
**Fee:** VIP \$60, Reg \$70  
**Ages:** 18+  
**Location:** The Pointe

## Private Pickleball Lessons

Individual and Group pickleball lessons are available. Contact Ally Roehl at [aroehl@ballwin.mo.us](mailto:aroehl@ballwin.mo.us) or at The Pointe.

## Lunch and Bingo

Join us for a lunch, fun BINGO and prizes! We will play BINGO, followed by lunch and dessert, and then play more games of BINGO. Pre-registration is required by the Monday prior to the event.

**Dates:** 1st & 3rd Weds  
(42302 in 2022)  
(18301 in 2023)  
**Time:** 11:30 a.m. - 1:30 p.m.  
**Fee:** VIP/Reg \$8  
**Ages:** 21+  
**Location:** The Pointe

## LOAP

Are you interested in making new friends, hearing great speakers, attending exciting day trips, or playing BINGO? If you are 55 or older, LOAP is a great group for you to join. Free coffee, tea, soda, and desserts are provided. Bring a sack lunch and \$2 to each meeting. Pre-registration is not required.

**Dates:** 2nd & 4th Mon.  
**Time:** 10 a.m. - 1 p.m.  
**Fee:** VIP/Reg \$2  
**Ages:** 55+  
**Location:** Golf Course

## Fish Tales

Looking for a fun way to spend your late morning with your toddler? Join us at The Pointe for story time, some crafts and a light snack. Finish the morning in the pool at our Little Splashers pool time! Guardians must accompany their child.

**Dates:** Nov. 10  
(41125-19)  
Dec. 8 (41125-08)  
Jan. 12 (11125-01)  
Jan. 26 (11125-02)  
**Time:** 9:30 - 11:30 a.m.  
**Fee:** VIP \$8, Reg \$10  
**Ages:** 2 - 5  
**Location:** The Pointe



## Paint By Arrow

Create a spectacular piece of art in a fun and unique way. Learn the basics of archery and use your skills to pop balloons, creating a masterpiece!

**Date:** Nov. 12 (48023-01)

**Day:** Saturday

**Time:** 1 - 3 p.m.

**Fee:** VIP \$12, Reg \$20

**Ages:** 9 - 14

**Location:** The Pointe

## Ignite Pool Party

NO PARENTS ALLOWED! We will have a blast swimming and playing pool basketball. Pizza, drinks, and desserts will be provided. Please bring a swimsuit and towel.

**Dates:** Nov. 18 (42004-02)

Jan. 20 (18004-02)

**Time:** 6 - 8:30 p.m.

**Fee:** VIP \$10, Reg \$12

**Ages:** 7 - 13

**Location:** The Pointe

## Snuggies, S'mores & Science Experiments

Grab your "Snuggly" and gather your little one around a campfire at The Pointe! We will get you fired up with fun, hands-on science experiments such as creating elephant toothpaste and Mentos soda rockets! Afterwards, enjoy the warmth of the fire while nibbling s'mores. Participants are responsible for bringing their own s'mores supplies (roasting sticks provided). Snuggies optional.

**Dates:** Nov. 19 (48026-01)

**Day:** Saturday

**Time:** 5:30 - 7 p.m.

**Fee:** VIP \$8/Reg \$10

**Ages:** All

**Location:** The Pointe

## LOAP Thanksgiving Lunch

Join the fun for our Thanksgiving Themed Lunch & Bingo! Enjoy good company with entertainment, bingo, desserts, and refreshments. Pre-registration is required, lunch included with the fee.

**Dates:** Nov. 28 (423015)

**Time:** 10 a.m. - 2 p.m.

**Fee:** VIP/Reg \$12

**Ages:** 21+

**Location:** Golf Course

## LOAP Holiday Lunch

Join the fun for our Christmas Themed Lunch & Bingo! Enjoy good company with entertainment, bingo, desserts, and refreshments.

Pre-registration is required, lunch included with the fee.

**Dates:** Dec. 12 (423016)

**Time:** 10 a.m. - 2 p.m.

**Fee:** VIP/Reg \$12

**Ages:** 21+

**Location:** Golf Course

## Taekwondo

### Beginner & Intermediate

Students learn respect, responsibility, and discipline in addition to basic hand and foot techniques. A uniform is purchased from the instructor.

**Dates:** Beginner:

Dec. 14 - Jan. 18

(43803-13)

Jan. 25 - Mar. 1

(13003-01)

Intermediate:

Dec. 14 - Jan. 18

(43804-13)

Jan. 25 - Mar. 1

(13004-01)

**Days:** Wednesdays

**Times:** 6:30 - 7:30 p.m.(Beg)

7:30 - 8:30 p.m. (Int)

**Fee:** VIP \$54, Reg \$78

**Ages:** 6+

**Location:** The Pointe

## Elf Workshop

Join us for a DIY holiday workshop at The Pointe. Choose your very own elf name, earn your ears and create hand-made gifts for someone special.

**Date:** Dec. 15 (48024-01)

**Time:** 6 - 8 p.m.

**Fee:** VIP \$15, Reg \$18

**Ages:** 6 - 11

**Location:** The Pointe

## Winter Break Basketball Camp

This camp will help our players improve their skills on the court! Campers will learn how to achieve their basketball goals under the instruction of Coach Samuel Pearson and some of his players from Missouri Baptist University. Please bring a water bottle and two small snacks daily. Registration is required by Thursday, December 22nd.

**Dates:** Dec. 26 - Dec. 30  
(425019-01)

**Days:** Mon-Fri

**Times:** 8 a.m. - 12 p.m.

**Fee:** VIP \$100, Reg \$120

**Ages:** 6 - 12

**Location:** The Pointe

## Adult Volleyball League

Join this fun group of coed, recreational level teams. Matches will consist of three games with a one-hour time limit. Teams will be seeded according to win/loss record for a single elimination tournament at the end. If registration is full, please register for the wait list! The league may be expanded if there is enough interest.

**Dates:** Jan. 13 - Mar. 10  
(18302-01)

**Days:** Fridays

**Time:** 6:30 - 9:30 p.m.

**Fee:** VIP \$140, Reg \$170/  
team

**Ages:** 18+

**Location:** The Pointe



# 2023 Summer Camps



Come join us for another awesome summer packed with fun-filled activities for just about every age!

Ballwin offers a variety of summer camps to choose from, so every kid can find something that interests them!

More information on specialty and sports camp options will be released when we get closer to the February registration deadline.

## Aqua Camp

**Do you love to be in the water and are between the ages of 8-13?**  
If so, Aqua Camp is for you! This camp runs from 9:00 am -3:00 pm each day. This camp meets at Holloway Park Pavilion each morning before heading to the pool for all day swimming and water games. Campers **MUST** know how to swim and pass a weekly swim test to be enrolled in camp. Aqua Campers are especially encouraged to bring plenty of sunscreen and water (Sunscreen will not be provided by camp)

**VIP/Resident: \$140    Regular: \$160**

## Day Camp

**An outdoor adventure awaits kids ages 5 - 10 at the Ballwin Day Camp!**  
The 9-week program runs from 9:00 am - 4:00 pm, Monday - Friday. Camp is based at The Pointe. Campers will participate in active, exciting programming, including one field trip or onsite fun day every session at the Indoor Pool and a full day every week at the North Pointe Aquatic Center. Crafts, games, sports, songs and other activities will round out a typical day at camp. All drop off and pick ups are done at the Pointe at Ballwin Commons, except Thursdays will be at The North Pointe Aquatic Center. Campers will be swimming Monday - Friday, so be sure to pack a swimsuit.

**VIP/Resident: \$140    Regular: \$160**

## Teen Camp

**Have a teen ages 11-14 who doesn't want to spend their summer on the couch?**  
Campers get to meet new friends and explore St. Louis through field trips and activities! This 9-week program runs three days a week, Monday, Tuesday and Wednesday from 9:00 am - 4:00 pm. Each week will consist of two field trip/Onsite fun days and one full day at the North Pointe Aquatic Center. Drop off will be at the Pointe on Mondays and Wednesdays and at the North Pointe Aquatic Center on Tuesdays. Campers will participate in crafts, games, onsite fun days, field trips and will swim twice a week in the Indoor pool. Field Trips and Onsite fun days will vary week to week. Campers will be swimming Monday - Wednesday, so be sure to pack a swimsuit!

**VIP/Resident: \$150    Regular: \$175**





## Extended Care:

Both Club AM and Club PM for Day/Teen Camps will take place inside the Pointe Meeting Rooms and/or gymnasium. Club PM for Aqua Camp will take place under the swim team pavilion inside the North Pointe Aquatic Center. A snack will be provided during Club PM. This program is VERY popular and often fills up shortly after camp registration begins. Be sure to register early to reserve your spot! Club AM has a max of 40, Club PM has no maximum.

**Club AM\*** 7:00 a.m. – 9:00 a.m.

VIP/Residents: \$25.00 per week  
 Regular: \$30.00 per week

**Club PM:** 4:00 p.m. – 6:00 p.m.  
 (3:00 p.m. - 6:00 p.m. Aqua)

VIP/Residents: \$25.00 per week  
 Regular: \$30.00 per week

*\*Club AM is NOT offered for Aqua Camp*

# Registration

Registration for the 2023 Ballwin Day Camp will open ONLY for VIP Members and Residents on **February 1, 2023 at 12:00 am**. Registration will officially open for everyone on Monday, February 13th. You can register online at [ballwin.mo.us/summercamps](http://ballwin.mo.us/summercamps) or in person at The Pointe. Registration closes at midnight the Monday before your camp selection is scheduled to begin, or when the session is filled.

There are caps on registration for several camps:

- Aqua Camp: 30 max
- Day Camp: 150 max
- Teen Camp: 50 max

Ballwin Summer Camp staff are local high school and college students, many of whom are Ballwin Day Camp Alumni. All staff goes through an extensive interview and a background check. During staff week, they receive training in child development, behavior management/modification, bullying prevention, leadership, programming and inclusion training from our community Inclusion Coordinator.

# Featured Special Events

## Music Trivia Night

Come out and support The Ballwin and Wildwood Historical Commissions at their Third Annual Trivia Night! Teams of eight/table will compete in ten rounds of trivia. Mulligans will be available with other fun games including Heads and Tails and a 50-50 drawing. There will be silent auction items too! Complimentary beer and soda will be provided. bring your own snacks, but outside drinks are prohibited. Doors open at 6 p.m.

**Date:** Saturday, Nov. 5 (108-05)  
**Day:** Saturday  
**Time:** 7 - 10 p.m.  
**Fee:** VIP/Reg \$200/table  
**Ages:** 21+  
**Location:** Golf Course



## Tons of Trucks

Come join us for a day of family fun with an up-close look at some very BIG vehicles. The parking lot will be filled with trucks and other vehicles of all shapes and sizes for you to admire, wander around, climb on and sit in! There will be a siren-free quiet hour from 10-11 a.m. See you there! Registration is not required.

**Date:** Saturday, Nov. 5  
**Time:** 10 a.m. - 12 p.m.  
**Fee:** FREE  
**Ages:** All  
**Location:** Target Parking Lot



## Candy Cane Hunt

Santa's reindeer have been busy dropping candy canes at The Pointe! Everyone will get a goodie bag and have an opportunity to snap a picture with Santa! Dress warm for this outdoor event. Check-in begins at 9:30 am. Candy Cane Hunt begins promptly at 10 a.m. Ages 2-10. Separate hunting areas for ages 2-4 and 5-10. No walk-up registration available.

**Date:** Saturday, Dec. 3 (48025-01)  
**Time:** 10 a.m. - 12 p.m.  
**Fee:** VIP \$8, Reg \$10  
**Ages:** 2 - 10  
**Location:** The Pointe

## Upside Down Indoor Triathlon

Looking for a unique challenge? Each participant will complete a 15-minute run, 15-minute Spinner bike, and 10-minute swim, in that order. Distance for each participant is calculated to determine the top finishers. Participants can choose to compete on Saturday, January 14 or Sunday, January 15. Please select the section based on the day you wish to participate (limited to 45 participants each day). Start times are staggered. The first start time is 7 a.m. The earlier you register, the earlier your start time will be!

**Date:** Jan. 14 (900-09)  
Jan. 15 (900-10)  
**Time:** 7 a.m. - 12 p.m.  
**Fee:** VIP/Reg \$30  
**Ages:** 8+  
**Location:** The Pointe



This is the first 2023 Ballwin Race Series event! We have a ton of fan-favorite events returning in 2023! Continue checking our webpage ([www.ballwin.mo.us/Ballwin-Race-Series-1/](http://www.ballwin.mo.us/Ballwin-Race-Series-1/)) for date announcements and event updates!



# Scholarship Fund

The City of Ballwin's Parks & Recreation department is pleased to provide scholarship assistance for programs administered by our department and memberships. Our goal is to ensure everyone has the opportunity to participate in essential activities like our summer camps and swim lessons. The scholarship program is designed for those families who, without financial assistance, would not have that opportunity.

Families who are interested in applying for financial assistance for these programs should first verify they meet the requirements listed on our Scholarship Fund Application ([www.ballwin.mo.us/Scholarship-Fund/](http://www.ballwin.mo.us/Scholarship-Fund/)). Qualifying families should then fill out the application and return it in a sealed envelope to:

The Pointe at Ballwin Commons  
ATTN: Matt Struempf  
#1 Ballwin Commons Circle  
Ballwin, MO 63021

Donations are always accepted for this fund! If you would like to contribute to the fund to help more families participate in the programs we offer, contact Matt Struempf at (636) 227-8950.



## Turning 65? On Disability?

Maybe it's time we talk about your Medicare options.

Licensed Agent for the following:

- Medicare Advantage Plans
- Medicare Advantage Special Needs Plans
- Medicare Supplement Insurance Plans
- Part D Prescription Drug Plans

*With over thirty years of experience in the business and insurance industry, I have the knowledge and expertise needed to help you navigate the Medicare process.*

*Let me help bring you clarity and peace of mind to one of the most important parts of your life –*  
**Your Health**

**MARIANNE BOURAS**  
LICENSED AGENT

MEDICARE-ABC.COM (314) 313-3602



# Ballwin Golf Course



### Information

333 Holloway Road  
Ballwin, MO 63011  
(636) 227-1750

### Hours (first tee time - last tee time)

November	9:00 a.m. - 3 p.m.
December	10:00 a.m. - 3 p.m.
January	10:00 a.m. - 3 p.m.

### Pricing

	9 holes
Resident*	\$15
Resident* Sr/Jr*	\$13
Resident* Hero*	\$12
Non-Resident	\$17
Non-Resident Sr/Jr*	\$15
Non-Resident Hero*	\$14

### Carts\*

Riding Cart (9 holes)	\$8 per person/2022 \$10 per person/2023
Pull Carts	\$2 per day
<i>*You must be 18+ to rent a Riding Cart.</i>	

\*Residents must present an active Parks & Recreation Resident ID card to receive this rate (purchased for \$5 at The Pointe and renewed annually for \$1. To purchase a Parks & Recreation Resident ID card, residents must provide an unpaid gas, sewer, water, or electric bill and complete an application (a PDF copy of online bill is acceptable).

\*Hero: Police, Fire, EMS, Veterans, and Active Military

\*Senior: 62 and older

\*Junior: 17 and under



## Turkey Bowl 18-Hole Scramble

Come out and enjoy our annual Turkey Bowl 18-Hole Scramble event held on Saturday, November 26. The event is a three-person team, 18-hole scramble format with tee times starting at 10 a.m. With a full field (18 teams) we should have three flights with winners in the first, second, and third place divisions winning prizes within each flight. The entry fee includes cart and greens fees, lunch, and prizes. Registration is ONLINE ONLY!

**Date:** Nov. 26 (Sat) (47816-01)

**Time:** 10 a.m. - 4 p.m.

**Fee:** \$165/team of 3

**Ages:** All

**Location:** Ballwin Golf Course

## Indoor Winter Golf League

Ballwin Golf Course will be hosting our first ever indoor golf league! It will consist of 10 rounds at different golf courses from around the world, but with the benefit of playing indoors on our simulator. There will be prizes and the golf will be handicapped for equal play.

There will be more details to follow as we get closer to our start date set for January 2023! The most important part of this is you will be able to play at your convenience any time we are open. For more information, contact Alex Graf at [agraf@ballwin.mo.us](mailto:agraf@ballwin.mo.us).

# TRY OUR **NEW** GOLF SIMULATOR

5-minute warm up \$5

1 hour \$30

333 Holloway Road  
(636) 227-1750



# Events Center



## COME CELEBRATE WITH US

- WEDDING
- SCHOOL FUNDRAISER
- TRIVIA NIGHT
- BIRTHDAY CELEBRATION
- REUNION
- CORPORATE EVENT
- RETIREMENT PARTY
- BANQUET
- TRADE SHOW
- CELEBRATION OF LIFE
- CONFERENCE
- REHEARSAL DINNER
- AND MORE!

WHATEVER THE EVENT, WE'RE  
HERE TO MAKE IT PERFECT!

For inquiries, please contact  
Events Planner, Kate Duffy.  
[eventsplanner@ballwin.mo.us](mailto:eventsplanner@ballwin.mo.us)  
(314) 805-7045

# 988 Suicide Hotline



There's a new number to call if you need help. The National Suicide & Crisis Hotline has launched a three digit phone number for all mental health, substance use and suicide crises. That number is 988. Calls are routed to the more than 200 National Suicide Prevention Lifeline centers across the country. The new 988 number replaces the old number (1-800-273-8255).

You can also text or chat with the new 988 number, making it easier than ever to get help if needed.

When people call, text, or chat 988, they will be connected to trained counselors that are part of the existing Lifeline network. These trained counselors will listen, understand how their problems are affecting them, provide support, and connect them to resources if necessary.

The U.S. Department of Health and Human Services released new data showing in August, the first full month that 988 was operational, the Lifeline saw a 45% increase in volume of calls, texts and chats compared to August of 2021.

For more information on the Lifeline and resources to help, head to [988lifeline.org](https://988lifeline.org).



# Event Calendar

## November

- 5 Tons of Trucks
- 5 Music Trivia Night
- 7 Planning & Zoning Meeting
- 11 Veterans Day
- 14 Board of Aldermen Meeting
- 18 Ignite: Pool Party
- 24 Thanksgiving Day (City offices closed 11/24)
- 25 Black Friday (City offices closed 11/25)
- 26 Turkey Bowl 18-Hole Scramble
- 28 Board of Aldermen Meeting

## December

- 2 Shop N' Swim
- 3 Candy Cane Hunt
- 5 Planning & Zoning Commission Meeting
- 12 Board of Aldermen Meeting
- 17 Shop N' Swim
- 24 Christmas Eve (City offices closed 12/23)
- 25 Christmas Day (City offices closed 12/26)

## January

- 1 New Year's Day (City offices closed 1/2)
- 3 Planning & Zoning Commission Meeting
- 7 Pointe Open House
- 9 Board of Aldermen Meeting
- 14 Upside Down Indoor Triathlon
- 15 Upside Down Indoor Triathlon
- 16 Martin Luther King Jr. Day (City offices closed 1/16)
- 23 Board of Aldermen Meeting



Photo: 2022 Cardboard Regatta in July



Photo: 2022 Ballwin Craft Beer Festival in September



Photo: 2022 Ballwin Days Festival in August

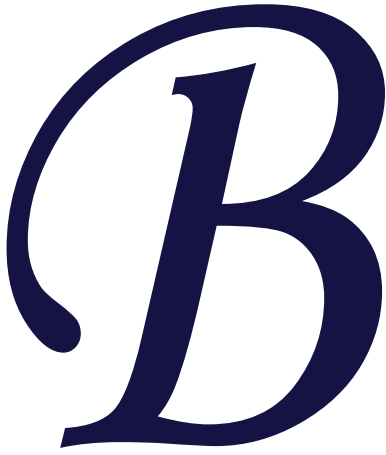
For a complete and updated list of City events and meetings please visit [www.ballwin.mo.us](http://www.ballwin.mo.us) and select the events tab.

Planning and Zoning Commission meetings are scheduled for 7 p.m. in the Board Room on the first Monday of each month, subject to petitions.

Board of Adjustment meetings are scheduled for 7 p.m. in the Board Room on the third Wednesday of each month, subject to petitions.

The Board of Aldermen meetings are scheduled to begin at 7 p.m. on the second and fourth Monday of each month in the Board Room.

Please note, all meetings are subject to change. Visit our website for the most current information.



#1 Government Ctr  
Ballwin, MO 63011

**SUPPORT OUR ADVERTISERS!**

Ballwin is fortunate to be home to many small businesses that make our city such a great place to live, work, and play. The cost of printing and mailing the Ballwin Life Magazine is partially underwritten by the many local businesses that purchased the advertisements found throughout the publication. Please thank these businesses for their support by shopping locally.

**VISIT US ONLINE AT: [www.ballwin.mo.us](http://www.ballwin.mo.us)**



WHERE CUSTOMERS ARE FIRST AND CARS ARE SECOND TO NONE



NO COMMITMENT ORDERING

EXCEPTIONAL SAVINGS

PICKUP AND DROPOFF SERVICE

PROUD BALLWIN DEALER SINCE 1985



15110 Manchester Rd. Ballwin, MO 63011  
636-227-5333 • [www.elcochevroletcadillac.com](http://www.elcochevroletcadillac.com)

**FIND NEW ROADS**