



Bill No. 4116

Ordinance No. _____

INTRODUCED BY

ALDERMEN UTT, FINLEY, STALLMANN, ROACH, FLEMING, LEAHY, KERLAGON, BULLINGTON

AN ORDINANCE AUTHORIZING THE CITY ADMINISTRATOR OF THE CITY OF BALLWIN, MISSOURI, ON BEHALF OF THE CITY, TO EXECUTE A ROADWAY DEDICATION PLAT FOR PART OF LOTS 6 & 7 OF MARY J. EICKERMANN'S ADDITION.

NOW, THEREFORE, BE IT ORDAINED BY THE BOARD OF ALDERMEN OF THE CITY OF BALLWIN, MISSOURI, AS FOLLOWS:

Section 1. The City Administrator of the City of Ballwin, Missouri, is hereby authorized to execute a Roadway Dedication Plat for Part of Lots 6 & 7 of Mary J. Eickermann's Addition, attached hereto.

Section 2. This Ordinance shall take effect and be in full force from and after its passage and approval.

PASSED this ____ day of _____, 2022.

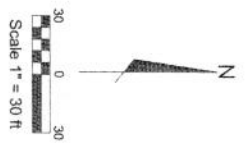
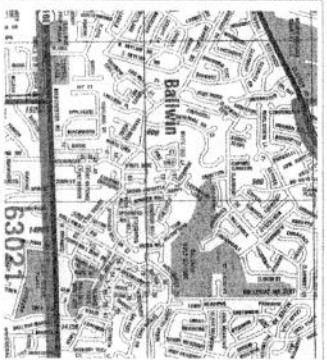
TIM POGUE, MAYOR

APPROVED this ____ day of _____, 2022.

TIM POGUE, MAYOR

ATTEST: _____

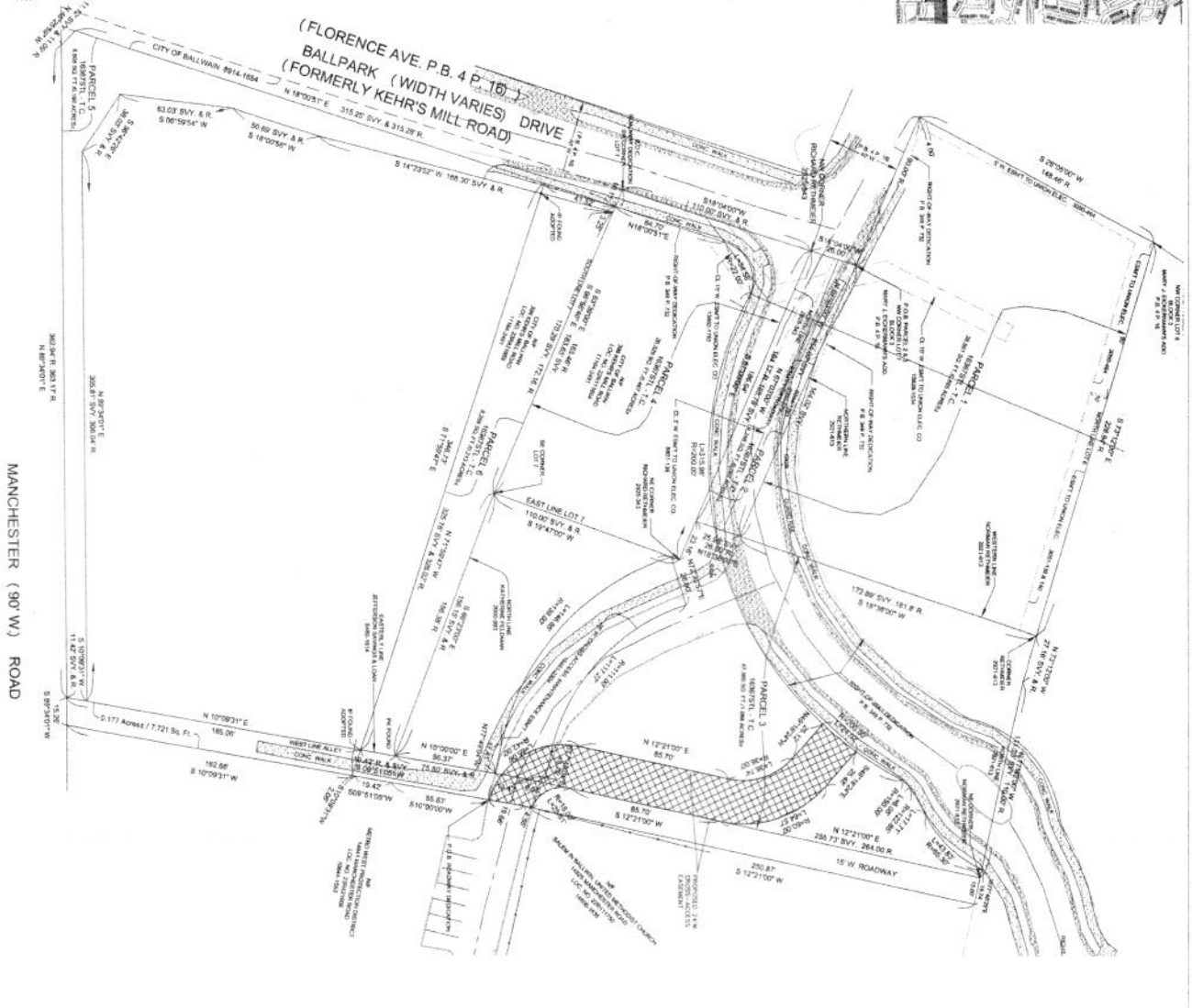
ERIC STERMAN, CITY ADMINISTRATOR



- LEGEND**
- CURB SILET
 - DOUBLE CURB SILET
 - SIDEWALK
 - LIGHT STANDOFF
 - WOODPOST IRON FENCE
 - GAS LINE
 - OVERHEAD ELECTRIC LINE
 - AREA TO BE VACATED
 - CONCRETE SIDEWALK
 - POINT OF BEGINNING
 - P.O.C.

THIS IS TO CERTIFY THAT WE HAVE EXAMINED MAPS AND RECORDS OF THE CITY OF BALLWIN, MISSOURI, AND THE CITY OF BALLWIN, MISSOURI, AND HAVE FOUND THAT THE INFORMATION CONTAINED HEREIN IS TRUE AND CORRECT AND THAT THE INFORMATION CONTAINED HEREIN IS TRUE AND CORRECT AND THAT THE INFORMATION CONTAINED HEREIN IS TRUE AND CORRECT.

John E. Winkler, Jr.
 JOHN E. WINKLER, JR., R.A.S. 01700004



ROADWAY DEDICATION PLAT
 PART OF LOTS 6 & 7 OF
 MARY J. EICKERMANN'S ADDITION
 PLAT BOOK 4 PAGE 16
 AND PART OF U.S. SURVEY 1908
 TOWNSHIP 45 NORTH, RANGE 4 EAST
 ST. LOUIS COUNTY, MISSOURI

DESCRIPTION: ROADWAY DEDICATION

A part of lot 7 in Block 3 of Mary J. Eickermann's Addition to the town of Ballwin and in U.S. Survey 1908, Township 45 North Range 4 East in St. Louis County, Missouri, and described as follows: ...

THE UNDERSIGNED CITY ADMINISTRATOR OF THE CITY OF BALLWIN, MISSOURI, HEREBY APPROVES THIS PLAT AND DEDICATION OF THE ROADWAY SHOWN THEREON AND CERTIFIES THAT THE INFORMATION CONTAINED HEREIN IS TRUE AND CORRECT AND THAT THE INFORMATION CONTAINED HEREIN IS TRUE AND CORRECT AND THAT THE INFORMATION CONTAINED HEREIN IS TRUE AND CORRECT.

STATE OF MISSOURI
 COUNTY OF ST. LOUIS
 I, CLARENCE W. HARRIS, Clerk of the Circuit Court, do hereby certify that the information contained herein is true and correct and that the information contained herein is true and correct and that the information contained herein is true and correct.

ROADWAY DEDICATION PLAT

For NAVIGATE BUILDING SOLUTIONS
 397 KEHR'S MILL ROAD
 BALLWIN, MISSOURI 63021
 TEL. 314-714-6111

METRON X
 Surveying & Land Use Co.
 10000 N. 11th Street, Suite 100
 St. Louis, MO 63141

REV.	DATE	DESCRIPTION	BY
1	10/10/20		JAW
2	10/10/20		JAW

CHECKED: JAW